



Melissa Daily will become executive director of the Coffey County Chamber of Commerce on Dec. 17.



Moved here in September of 2018 to be with family and now family is calling me back to Ohio. It has been an honor and privilege to serve this community. Thank you, Coffey County for this opportunity!
—JoAnn Harritos, Executive Director

Daily to become executive director

Effective Thursday, Dec. 17, Melissa Daily will be the new executive director for the Coffey County Chamber of Commerce.

Born and raised in South Texas, Melissa has always had a passion for serving the people around her. From community service projects as a young student to volunteering in with civic and church events or at her children's

school, she has years of experience serving the local community. She, along with her husband, Justin, and their two daughters, Audrey and Caroline, relocated to Kansas in 2015. They currently enjoy their quiet neighborhood in Gridley.

Since 2017, Daily has served as the office manager for Radiant Life Church where she has used her passion to serve

to positively impact a growing church and the surrounding community. During her time with Radiant Life, she has organized multiple community outreach initiatives, like teacher appreciation, adopt-a-family for Christmas and Kicks for Kids. Daily worked as a licensed insurance agent in Texas before moving to Kansas.

When she isn't in the office,

she is taxiing kids around, going on dates with her husband, having coffee with friends, studying for classes at Emporia State University, coaching fitness bootcamp at the rec center or creating art. Daily is looking forward to meeting and working with more members of the community in her new role as executive director of the Coffey County Chamber of Commerce.

11th Lane Roastery and Blessed Bees adapting to pandemic

11th Lane Roastery was born in June of 2017 when Derek Bucheit taught himself the art of roasting fresh coffee.

"We are able to buy green coffee in bulk originating from all over the world using an importer in Kansas City," Bucheit said. "We roast this coffee in small batches on our back porch, to order, from a light roast to an espresso roast. This allows us to provide the freshest coffee available in Coffey and Lyon counties."

11th Lane Roastery merged with Blessed Bees in 2019 after the wedding of Derek and Melanie Bucheit, both local beekeepers. "We sell our honey as raw and unfiltered to make sure it retains all the benefits of local honey," Bucheit said.

Their hives are all located just outside the Burlington city limits, with the majority of them being right in their yard. "Beekeeping is definitely a challenge, but that is part of the fun," Bucheit said. "It's constantly making you rethink what you thought you knew in order to help the bees thrive."

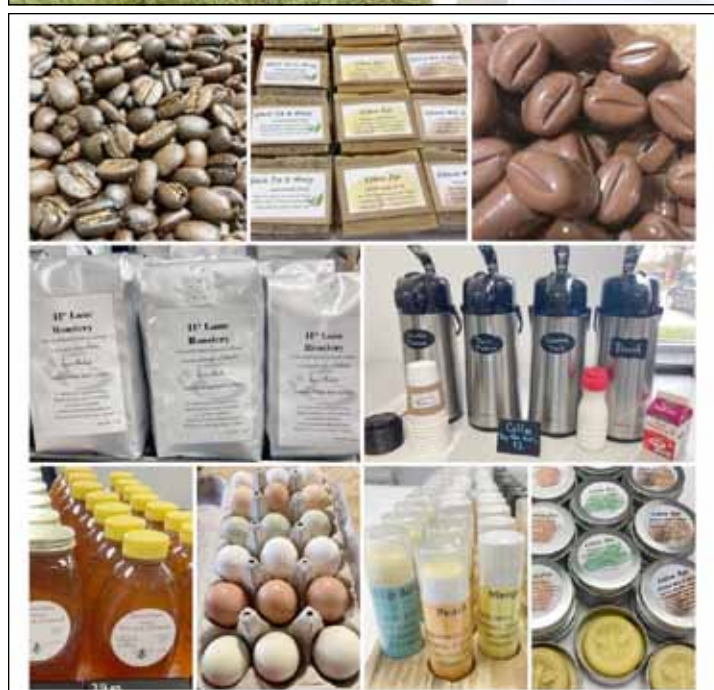
In the last year, the Bucheits

have worked to expand their product line. "We were blown away with how well our chocolate covered espresso beans were received," Bucheit said.

They are making a variety of products with their honey and beeswax, including artisan soap, lip balm and lotion bars. "We were extremely blessed to have a couple who has been making amazing products for 30-plus years share their recipes and tricks of the trade with us and we are thrilled with the quality of these products," Bucheit said.

11th Lane Roastery and Blessed Bees sell their products at the Emporia Farmers Market, various events throughout the year, through their Facebook page and from their front porch display. They can be reached by calling (785) 633-2062 or emailing 11thlaneroastery@gmail.com. They can ship products for an extra fee.

COVID 19 has canceled many of the events they attend regularly, including the Burlington Christmas Craft Fair, which is their largest event by far. "We have had to adapt ... we have had to focus more on online sales and advertising," Bucheit said. "We have also been blessed to be able to attend multiple small craft fairs that have popped up in the communities in Coffey County. It's amazing what God has been able to do to provide for us throughout this pandemic."



MEMBER SPOTLIGHT

Burlington Lions Club

Craig Stukey
President

Wanda Weldin
Secretary



Coffey County Chamber of Commerce members

(List is current as of December 1, 2020)

- 4 Rivers Electric Co-op
- 11th Lane Roastery
- Advantage Realty Group, LLC
- Alpha Roofing
- Apollo Medical Services
- Arrowhead Hills Travel Service
- Artisans Reflections Take 2
- Atmos Energy
- AuBurn Pharmacy
- Bahr Tire, Inc. and Bahr Storage
- Barnhouse Cafe
- Before Investments, LLC
- Bobwhite Vines
- Burlington Building Materials
- Burlington Construction
- Burlington Dental Center
- Burlington Lions Club
- Burlington RV Park, LLC
- Burlington Tax Center
- Burlington United Methodist Church
- C. Allen For Your Doors, LLC
- Casey's General Stores, Inc.
- Central National Bank
- Christian Church of Burlington
- Citizens State Bank
- City of Burlington
- City of Gridley
- City of Lebo
- City of LeRoy
- City of New Strawn
- City of Waverly
- COF Training Services, Inc.
- Coffey County Airport
- Coffey County Cancer Support Group
- Coffey County Chamber of Commerce & Visitor's Center
- Coffey County Council for the Arts
- Coffey County Economic Development
- Coffey County Fire District #1
- Coffey County Historical Society and Museum
- Coffey County Housing Authority
- Coffey County Land Title Co., Inc.
- Coffey County Library
- Coffey County Transportation
- Coffey Health System
- Country Haven Inn
- Coursen Fitness & Performance
- Crow-Moddie Chevrolet
- Crow-Moddie Ford
- Dairy Queen
- Dr. Dale Herder, OD
- ECKAN
- EMP Shield
- Emporia Quality Inn and Suites
- Faimon Publications
- Farm Bureau Financial Services
- Farmer's Tan
- First National Bank of Kansas
- Floyd Lewis Foundation
- Grand Central Station
- Great Plains Design Center
- H&H Roofing & Restoration
- Hometown Pie Company
- Hope & Health: Juice Plus - Janelle
- Stukey
- Hoover's Thriftway
- IM Design Group
- Integrity Insurance Agency
- Jared's Custom Vinyl
- Jones Funeral Home
- Kansas Power Pool
- Kan-Seal
- King's Liquor & Wine
- Kirchner Chiropractic
- Kitchen and Bath Trends of Kansas
- KSX Performance LLC
- La Quinta Inn of Emporia
- Legacy Financial, Richard Croll
- LeRoy Co-Op
- Lewis Oil Company
- Life Care Center of Burlington
- LuLaRoe Independent Fashion Consultant, Stacy Haines
- M & M Pest Control and Lawn Service
- Mary Kay Independent Consultant, Heather Bolen
- Mediacom
- Merry Investments
- MT Networks
- MyTown Media; 97.7 The Dawg, KISS 103.1, MyCountry 99.5
- NAPA Auto Parts
- Navrat's Office Products
- New Strawn Community Christian Church
- Pizza Hut
- Prescription Centre
- Pump n Petes
- Quantum Credit Union
- Rock Creek Dental
- Ryan's Pest Control
- Sarah J. Stockwell Accounting
- SCORE Liquor, Pizza & Convenience Store
- SE KansasWorks
- SOS, Inc.
- Spill the Tee
- State Farm Insurance, Patty Ann Sanborn
- Stevens and Brand, LLP
- Steward's Service
- TLC Marketing Consultants
- The Appliance Store
- The Dam Liquor Store
- The Medicine Shoppe
- The Quart House
- The Sassy Owls
- Therapy Services, LLC
- Thweatt Electric, LLC
- TrustPoint Insurance
- TrustPoint Real Estate
- USD 244 Burlington Schools
- USD 244 Recreation Commission
- Vaughn Roth Land Brokers, LLC
- Vintage Sisters
- Waddell & Reed Financial Advisers
- Waverly Insurance Agency
- Wireless Concepts/U.S. Cellular
- Wolf Creek Nuclear Operating Corp

Support these businesses who support the Chamber Page!

WOLF CREEK
NUCLEAR OPERATING
We Support Coffey County
1550 Oxen Lane N.E. • Burlington, KS
(620) 364-8831

TrustPoint
Insurance & Real Estate
800 N 4th St
Burlington
620.364.8811
www.trustpointservices.net

Life Care Center of Burlington
601 Cross St. - Burlington, KS
(620) 364-2117
www.LCCA.com

Farm Bureau Financial Services
Larry Gleue
(620) 364-5341

Central National Bank
Money for Life
201 S. 4th in Burlington
(620) 364-8875
Member FDIC

Merry Investments
201 N. 3rd St.
Burlington
(620) 364-3051

Coffey County Airport
1899 Hwy. 75 • Burlington, KS
Darren Isch, Manager
(620) 364-5346
Email: ccairport@kans.com
Summer Hours: 8 a.m.-8 p.m.
Winter Hours: 8 a.m.-6 p.m.

Outpatient Substance Abuse Treatment Therapy Services
420 Kennedy St. • Burlington
(620) 364-2606
By appointment only.

THE NATIONAL BANK OF KANSAS
"Your Bank of a Lifetime"
We're Here For You
www.fnbofks.com
Burlington 600 N. 4th (620) 364-8472
Waverly 305 Pearson (785) 733-2564
Member Federal Deposit Insurance Corporation

Training Services Inc.
Community Developmental Disabilities Organization providing services to adults and children with disabilities, through cooperation with the community and businesses.
1415 S. 6th St. Burlington, KS
(620) 364-2151

Prescription Centre
INSIDE HOOVER'S THRIFTWAY
Pharmacy, U.S. Postal Drop, ATM, Film Developing, Double Coupons, Deli, Food Stamps, Fax Center (620) 364-2887

Coffey County Economic Development
Contact us for business assistance!
* Business expansion or relocation needs
* Local, regional, state resources and funding
* Workforce resources

the QUART HOUSE LIQUOR
105 Bree Dr., Lebo, KS
Wine-down Wednesdays
10% off all wines every Wed.
(620) 256-5888
The Quart House LLC
OPEN 7 DAYS A WEEK:
M-W: 11 a.m.-9 p.m.
Thurs: 10 a.m.-9 p.m.
F-Sat: 10 a.m.-10 p.m.
Sunday: Noon-8 p.m.

NAPA Auto Parts
423 Kennedy • Burlington
Mon.-Fri. 7:30 a.m.-5:30 p.m.
Sat. 7:30 a.m. - 1 p.m.
(620) 364-5327

STEVENS BRAND
Elder Law and Medicaid Planning
Trust and Estate Planning
Probate, Estate and Trust Administration
DENISE L. MCNABB • (785) 408-8000

COUNTRY HAVEN INN
207 Cross St., Burlington
(620) 364-8260
countryhaveninn.com

VINTAGE SISTERS
(620) 203-1248
114 N. 3rd St., Burlington
visit The Other Sister @ 104 N. 3rd St.

Ronda Truelove Interm Director
110 S. 6th, Rm. #5 Burlington
Office: (620) 364-8780
Email: rtruelove@coffeycountysks.org

State Farm
Call State Farm Agent
Patty Ann Sanborn
415 North 4th • Burlington, KS
Like a good neighbor, State Farm is there.
statefarm.com
Patty Ann Sanborn
(620) 364-5810

Kitchen & Bath Trends OF KANSAS
427 Main St., Gridley, KS
(620) 836-5741
4657 Indian Creek Pkwy., Overland Park, KS
(913) 831-8683
www.kbtk.com

Built on the Past Banking for the Future
CITIZENS STATE BANK
313 Neosho • Burlington
(620) 364-8895

CCT COFFEY COUNTY TRANSPORTATION
Call or stop by for transportation arrangements.
(877) 364-1905 or (620) 364-1935
520 Cross St. • Burlington, KS

Coffey County Housing Authority
313 Neosho • Burlington
(620) 364-8895

Coffey County Chamber of Commerce