

Homecoming Win

The SCCHS basketball teams played Marmaton Valley in their Winter Homecoming games Friday, Feb. 14, with the Titan boys coming away with their first win of the season.

Page 12



Contact Us

CALL (620) 364-5325
FAX (620) 364-2607
EMAIL
ccrepub@gmail.com

or MAIL
THE REPUBLICAN
P.O. DRAWER A
BURLINGTON, KS 66839

ONLINE EDITION:
www.coffeycountyonline.com

Death Notices

Page 2

- Tommy Leihnsing, 86
- Dan Salava, 62
- Vernon Sylvester, 92
- Joyce Simmons, 72

Lake Levels

John Redmond

8a.m. Tuesday, February 18
Lake Elevation: 1,041.62
Normal: 1,041
Inflow (cfs): 129
Release (cfs): 537

Melvern

Lake Elevation: 1,034.33
Normal: 1,036
Inflow (cfs): 245
Release (cfs): 20

Pomona

Lake Elevation: 972.47
Normal: 974
Inflow (cfs): 165
Release (cfs): 15

Public Notices

Page 8

- Wells Fargo Bank vs. Justin Meyer, et al. - Notice of Sheriff's Sale.
- McCullough Guardian-ship - Notice of Hearing.
- Clarence M. Frye - Notice of Hearing.
- Coffey County - Invitation to Bid Bulk Deicing Salt.
- Coffey County - Invitation to Bid Liquid Asphalt 2020.
- Stephen Evans vs. Marietta Evans - Notice of Suit.
- City of Waverly - Ordinance No. 559, Water Supply Improvements.
- City of Waverly - Annual Treasurer's Report.
- Coffey County Historical Museum - Invitation to Bid Mowing.
- Kristin Lewis vs. Andrew Lewis - Notice of Suit.
- RJ Energy - Notice of Filing Application.

Access public notices throughout Kansas at www.kansaspublicnotices.com

Index

- Agriculture Page..... 10
- Classifieds 9
- Community 3,5
- Courthouse News 8,9
- Deaths 2
- Devotional 5
- Opinion 4
- Public Notices 8
- Record 2
- School 6,7
- Sports 12,13,14
- Weather 2

The official newspaper of Coffey County

Burlington, New Strawn, Lebo, Gridley, LeRoy, Waverly, and Hartford

Lebo-Waverly USD 243
Burlington USD 244
LeRoy-Gridley USD 245



BHS GIRLS STATEBOUND IN WRESTLING

The Burlington Lady Wildcat girls' wrestling team competed in the inaugural girls' East Regional Tournament at Paola Friday and Saturday, Feb. 14 and 15. Of the nine BHS team members, three qualified for the state tournament and will be part of the very first KSHSAA-sanctioned Girls' State Wrestling Championship. They also helped lead their team to a fourth-place finish in the team standings. The three state qualifiers are, from left, sophomore M.J. Huff, junior Bryleigh Isch and sophomore E'owynn Codney. Codney went 4-1 and was the regional runner-up at 116 pounds, Huff went 5-1 and was the third-place finisher at 109 pounds and Isch went 3-3 and was the sixth-place finisher at 191 pounds. The three girls will compete in the state tournament Thursday, Feb. 27, at Tony's Pizza Events Center in Salina, with opening ceremonies beginning at 8:30 a.m. and the first round of wrestling starting at 9 a.m. Full results from the East Regional Tournament and a special page wishing good luck at state for all girls' and boys' state qualifiers will appear in next week's edition of The Republican. The boys' regional tournament is this Friday and Saturday, Feb. 21 and 22, at Garnett, with state to follow, for wrestlers placing in the top four at the regional, next Friday and Saturday, Feb. 28 and 29, at Tony's Pizza Events Center in Salina.



Photo submitted

COFFEY COUNTY COMMISSION

Lawsuit, economic development highlight agenda

Mark Petterson
Managing Editor

BURLINGTON — Coffey County Commissioners designated dates for spring cleanup week, revised motions related to a former employee's lawsuit, heard comments from a citizen regarding economic development and approved a number of motions presented by the county engineer.

A full commission attended the weekly meeting: Chairman Cody Haddock, Bob Saueressig, Don Meats, Tom Huginin and Fred Rowley. The meeting was held Tuesday, since the courthouse

was closed Monday for Presidents Day.

Health Department

County Health Administrator Lindsay Payer highlighted her monthly written report presented to commissioners. She is in the early stages of working with Crosswinds to possibly use telemedicine to benefit about 50 clients who have to drive to Emporia in order to fill their medication needs. Payer said the reason they have to drive to Emporia is to physically see their psychiatrist before getting prescription refills.

Payer said a strategic plan has been

created. They are working to get specific mental health training for law enforcement.

Under county employee wellness, there were 100 participants for blood draws. She said they are trying to revamp the bike program.

Schools in Coffey County are seeing more illness. The normal absentee rate is considered to be under 3 percent. Payer has asked county schools to contact her when the absentee rate doubles, which happened in Burlington last week. Many students had flu-like, cold-like and stomach illnesses.

Payer is looking at a referral system

called IRIS (not the emergency notification system) that is being used to ensure proper referrals through an electronic system.

Environmental Health conducted 32 site inspections, including 28 fencing properties. Twenty Phase II letters will be sent in March.

Payer said they have implemented all procedures suggested during the ALICE evaluation and training. She also said the health office will close 9:30 a.m. to 3 p.m. Monday, Feb. 24 for all-staff training.

See **County**, Page 11

Kansas hospitals keep Kansas healthy and economically strong

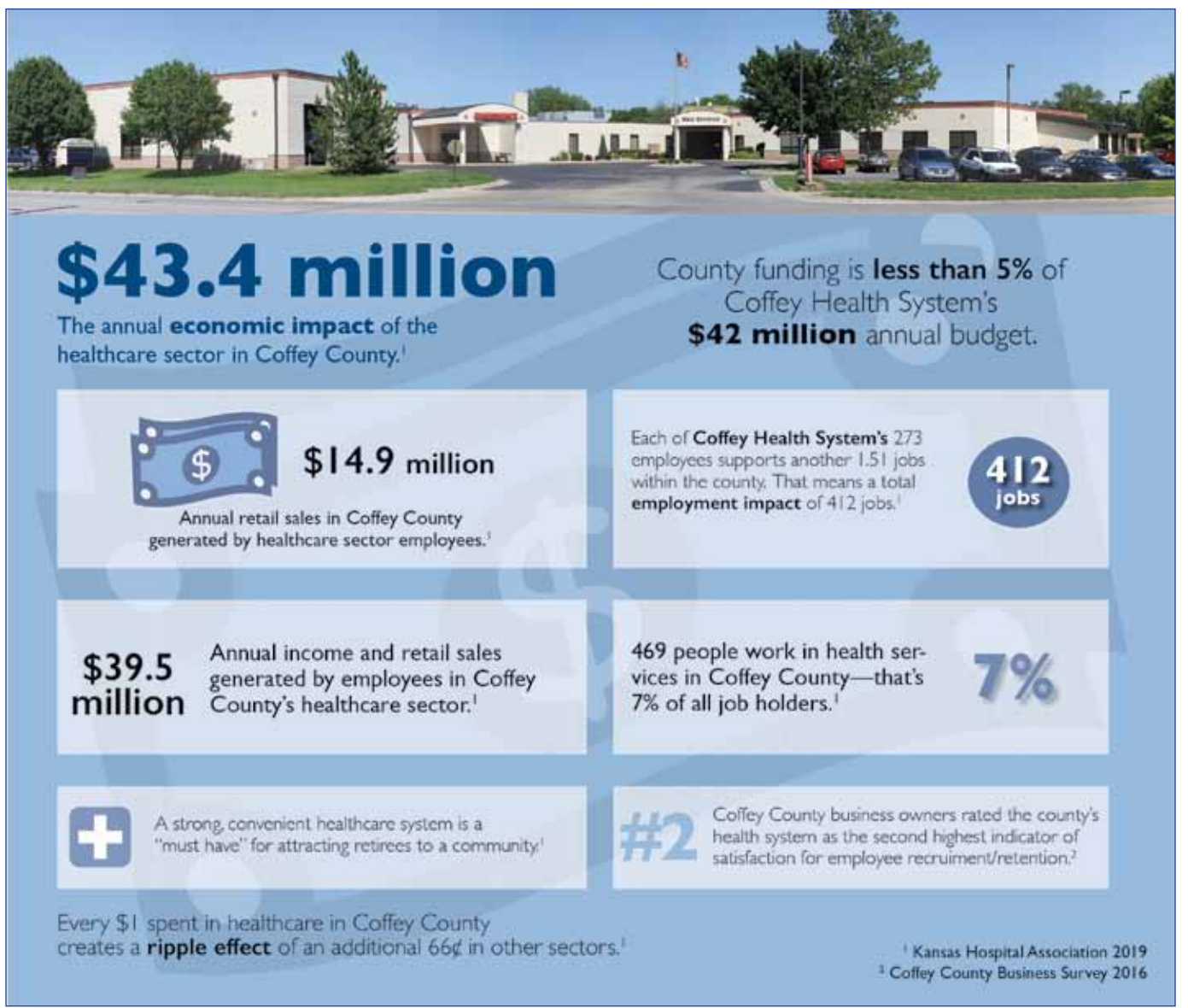
Hospitals and health care systems are a powerful economic force in Kansas. The state's health care sector generated \$17.9 billion in income and \$31.4 billion in sales last year, ranking it fifth among all economic sectors in the state. Hospitals were the biggest contributor in the health sector, generating \$8.4 billion in income and \$16.4 billion in sales. Kansas hospitals employ more than 97,000 of the 240,000 health service employees in the state. The health care sector is the third largest aggregate employer in the state.

These are just a few of the findings in the January 2020 report, The Importance of the Health Care Sector to the Kansas Economy, which details estimates of the "gross" impact of the health care sector on economic activity in the State of Kansas. In the report, K-State researchers identify three primary ways health care influences local economic development: health care attracts and retains business, attracts and retains retirees, and creates local jobs.

Jobs are an essential part of the economic impact; however, funds also flow to businesses and throughout the economy as hospitals purchase goods and services. Hospitals generate nearly \$4 billion in local retail sales in Kansas each year. Additionally, the hospital sector generates more than \$259 million in state sales tax. These are critical funds that the state uses for important programs such as education and transportation.

"Hospitals and health services truly are an economic anchor in our state," said Tom Bell, president and CEO of the Kansas Hospital Association. "This

See **Hospitals**, Page 11



WAVERLY CITY COUNCIL

Flushable wipes causing problems

Ida Wilson
Reporter

WAVERLY — Most cities, regardless of size, are dealing with costly repairs because wipes are being flushed into the sewer system. The City of Waverly is no exception.

When the Waverly City Council met in regular session on Wednesday, Feb. 12, a discussion took place on the need to educate the public on the harm being done to their sewer lift stations. The problem was created when manufacturers advertised that their wipes were flushable. Once flushed the wipes float, causing damage to lift stations.

Because of the wipes being sent into the sewer system, the routine of checking lift stations is more frequent. The repairs are costly. Some cities are work-

ing to create devices to solve the problem but the solution so far has not been found.

In the next few weeks an effort will be made by Waverly City Hall to educate the public. The advertisement will encourage people to only flush the three P's. Those being pee, poop, and (toilet) paper. All other items need to be put in the trash.

If the campaign to educate the citizens does not solve the problem, homeowners can expect an increase in the sewer rates.

Jackie Clarkson was present regarding use of the Waverly Community Building, which requires a refundable deposit and a \$125 rental charge. After some discussion, the council decided to create a list of organizations that make a large enough impact on community life

to justify waiving costs. Currently, the council placed the Homemaker's Club and the Waverly Booster Club on that list. The Homemaker's Club want the building once a year to host the Christmas event where Santa comes to Waverly. The newly reorganized Waverly Booster Club plans to use the building on the second Sunday of each month, but will relinquish it if someone else needs it.

Coffey County Fire District Administrator Randall Brown and Waverly Station 7 Chief Steve McCurry, were present regarding the City of Waverly sharing in the purchase of a generator that would serve both Waverly City Hall and the fire station. The council approved helping with 50 percent of the

See **Waverly**, Page 11

ATV fatality under investigation

NEW STRAWN — The Coffey County Sheriff's Office is investigating an ATV accident reported at 6:06 p.m. Tuesday, Feb. 11, in the area of 18th Road and U.S. 75. The driver of the ATV, Dan Salava, 62, Burlington, was unresponsive and was later declared deceased. Salava was apparently checking on cattle on the family ranch.

A sheriff's office news release said, upon arrival, emergency personnel attempted life saving measures, but were unsuccessful.

Emergency responders included the sheriff's office, Coffey County EMS, Coffey County Fire District No. 1 — New Strawn, and Coffey County Emergency Management.

Funeral services for Salava were held Monday morning at the Burlington United Methodist Church.